



SOUTH KITSAP
SCHOOL DISTRICT

South Kitsap School District
2689 Hoover Ave SE
Port Orchard, WA 98366

Non Profit Org
US Postage Paid
Permit NO 111
Silverdale WA

ECRWSS

POSTAL CUSTOMER

COMMUNITY CONNECTION - SPRING 2021

Return to Campus for South Kitsap Students

The 2020-2021 school year started with remote learning for all students. Decisions to return students to campus were based on state guidance and close collaboration with Kitsap Public Health District. We followed their recommendation to focus on the youngest learners first and cautiously transitioned additional grade levels as it was safe to do so.

Safety guidelines and modifications vary between elementary, middle, and high school due to critical details and complicated logistics including room and campus set up, and the complexities of the instructional schedule and staffing. Each school is different and the modifications were made to meet the needs of each site.

Small groups of students who receive special education services were the first phase in the return to campus transition. On January 11, students in

kindergarten, first, and second grade who selected SK Flex started back on campus. They were followed by third, fourth, and fifth grade students two weeks later. Starting February 8, SK Flex students in seventh, eighth, and ninth grade started back on campus and high school students returned on March 15.

Athletics and activities were added following strict safety guidelines and according to the WIAA abbreviated and modified high school sport seasons. Intramural options were added for middle school students.

Education during a pandemic has been difficult for everyone. We appreciate the patience and flexibility of families and staff as we have adapted to support students. The safety of our school community is our top priority and it is wonderful to see students back on campus.



SK Flex Students on Campus
Approximately 6,100 SK Flex
Preschool - Grade 12



SK Online Remote Learning
Approximately 2,400 SK Online
Preschool - Grade 12



FREE Meal Program
53,000 meals provided weekly



Athletics & Activities
Students connecting and engaging



Adapting to Keep Students & Staff Safe

The long awaited reality of students on campus means the world to staff who are working harder than ever before. It is a boost to morale to see smiling eyes and friendly waves as students step off the buses in the morning.

Not all families chose to transition to SK Flex, in fact, about one-third of students chose to continue learning from home with SK Online. There are also several staff providing instruction from home due to health reasons. The remote learning experience has been different for every student. Some are thriving and some could not wait to be back on campus. Regardless of how instruction is delivered, South Kitsap staff are working tirelessly to support students and ensure their success.

Due to safety precautions and modifications, a day on campus looks different than what students and staff are accustomed to seeing. The differences start before the students leave the house. First, families complete a health attestation to confirm the wellness of every student. Masks are required on campus and have become part of the routine around the community.

Upon arrival on campus, students are greeted by a staff member and their temperature is taken. Health attestations are confirmed and the students quickly go to their first class. Desks and seating areas are spaced out within each classroom. Teachers and support staff interact with students while masked and at a safe distance. During lunches, students sit well distanced from others and remove their masks for eating and drinking.

Extracurricular activities and athletics also have a different look and feel. South Kitsap middle schools are offering intramural athletics as an alternative. WIAA modified the high school sport seasons. Student athletes wear masks and only a limited number of spectators are allowed. The Video Production Department at South Kitsap High School is able to provide live stream video coverage of athletic events so fans can cheer from a distance.

This school year has been unlike anything we've ever experienced. When we transitioned to remote learning last spring, we did not anticipate this school year would be impacted in such a big way. While the uncertainty about the future is stressful, we continue to work together to support students and make the best of difficult circumstances. Students, staff, and families are learning and improving throughout the process. We don't want a return to what was. Instead, let's strive for a better and brighter future for our school community.



A Marcus Whitman Middle School student receives his schedule on the first day of SK Flex.



A Manchester Elementary student and teacher work together on an assignment.



Mullenix Ridge students make the most of recess time.



Roscoe greets a student athlete at South Kitsap High School sports conditioning.

Thank you, SK!

Replacement Levy Approved



Thank you to the South Kitsap community for approving the Educational Programs & Operations Levy. This measure replaces the levy that expires at the end of 2021. Collection begins in 2022 and will run through 2025.

Levy programs and enrichments empower South Kitsap students to explore options, access enhanced learning opportunities, attend safe school facilities with the staff and technology tools they need to achieve success.

The replacement levy will maintain the local tax rate not to exceed \$2.50 per thousand of assessed home value or will be capped at a maximum amount based on student enrollment, whichever is less. The Educational Programs & Operations Levy makes up about 15% of the district budget and bridges the gap in the cost of current opportunities and programs that support South Kitsap students.

Examples of Levy Funded Support

- Advanced Placement and other innovative programs
- Music, drama, and arts programs
- Librarians and Instructional Specialists
- Special Education programs
- Computers and technology support
- Curriculum adoptions
- Nurses, Counselors, Social Worker, School Psychologists
- Athletic programs and extracurricular activities
- Transportation
- Safety, security, and emergency preparedness
- Maintenance and repair of facilities and systems

100 Years of SK Pride

In 2021, South Kitsap High School celebrates 100 years of leading the pack. While the community has certainly changed over the years, the pride we feel for our schools remains strong. The SK Football boosters updated the SK Pride flags to commemorate the centennial!





DESTINATION
TOP 5



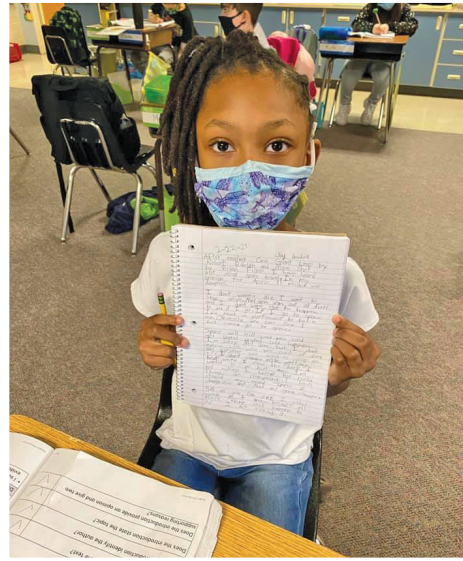
ACADEMIC
EXCELLENCE

DISTRICT ANNUAL REPORT 2020-2021

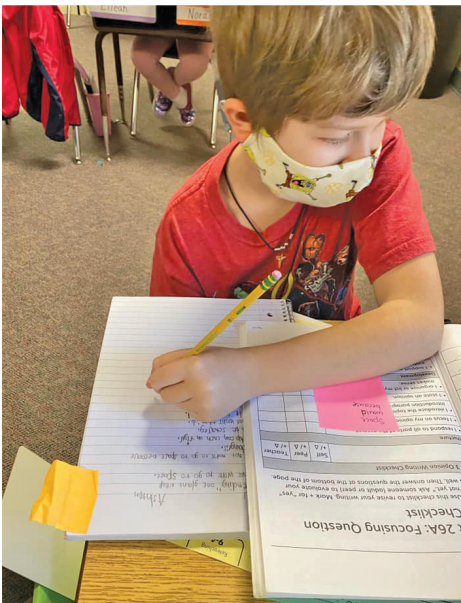
This report is a 'snapshot' of South Kitsap School District for the 2020-2021 school year. It captures information about student demographics. Typically the annual report also includes State assessment data for the previous year (2019-2020). Smarter Balanced Assessment is a comprehensive system designed to measure how well students are learning the Washington State K-12 Standards in English Language Arts (ELA) and Mathematics.

Due to the COVID-19 pandemic, early school facility closure, and the suspension of year end testing, the State assessment and NAEP were not administered in 2020. Additional detailed information, including South Kitsap School District's previous year performance on statewide assessments and Washington State's performance on NAEP is available on the Office of Superintendent of Public Instruction website:

www.k12.wa.us. Select the blue State Report Card button on the right hand side and choose your district or school. You may also request a printed copy by contacting the Learning and Instructional Support Department at 360.874.7055.



Third grade students from Manchester Elementary proudly displaying their writing projects.



Families may have questions or concerns about an aspect of their child's educational experience. The parent guide to resolution and the complaint procedure are available on the SKSD website.

SKSD recognizes that parent and family engagement helps students participating in Title I programs achieve academic success. The full parental engagement policy (4130) is also available on the SKSD website: www.skschools.org.

SKSD Enrollment	
October 2020 Student Count includes Connection Academy	10,181
Gender 2020-2021	
Male	51.1%
Female	48.9%
Race/Ethnicity 2020-2021	
Hispanic / Latino of any race(s)	12.8%
American Indian / Alaskan Native	1.1%
Asian	2.5%
Black / African American	1.9%
Native Hawaiian / Other Pacific Islander	1.6%
White	67.9%
Two or More Races	12.2%
Special Programs 2020-2021	
Free or Reduced-Price Meals	32.7%
Special Education	15.5%
Transitional Bilingual	2.7%
Migrant	0.0%
Section 504	4.8%
Other Information	
Adjusted 4-Year Cohort Graduation Rate (Class of 2020)	85.9%



DISTRICT FINANCE - SCHOOL FUNDING

South Kitsap School District takes pride in operating in a resourceful and responsible manner. Our annual operating budget is approximately \$165.4 million and most of our spending directly supports classroom instruction. Our resources, equipment, and technology sustain innovative programs and instruction to support safe and successful learning environments for our students. We use public tax dollars efficiently to equip our students with the knowledge and skills to succeed in an ever-changing global society.

Funding Sources

The budgeted General Fund pays for day-to-day operations and is funded by a variety of sources:

State Dollars

74%\$122,302,843

The largest source of funding for local schools comes from state tax dollars.

Local Levy Dollars

15% \$26,520,460

Enrichment levy funds are collected from taxpayers and must be approved by local voters. The funds are used for day to day costs and are collected over a set number of years.

Federal Dollars

9% \$14,478,472

Over 99% of federal dollars are strictly allocated, meaning the district can't use federal dollars to make up for shortages in other funding. This includes special education targeted assistance and school food programs.

Other - Including Donations

2% \$3,355,651

All other funding sources include local gifts and donations, which are used to fill very specific needs.



How the Funding is Used

The focus is on instruction. On average, 72% of the money goes to our teachers and their support, 12% to school and district administration.

Teaching and Teaching Support, School and Central Office Staff

84% \$138,344,182

Last school year, we spent 84¢ of every dollar on teaching and teaching support, which includes librarians, counselors, and classroom assistants, and special education support.

Custodial, Maintenance, & Grounds

5% \$8,935,499

Just over a 5¢ of every dollar we spent last year was on school maintenance, custodians, and ground crews.

Nutrition Services

2.5% \$4,120,575

Just over 2.5¢ per dollar went to provide students with nutritious meals.

Transportation

5% \$8,205,319

5¢ per dollar was spent on buses and drivers, who safely transported students approximately 1.33 million miles last year.

Utilities

2% \$3,185,450

Just over 2¢ per dollar was spent on power, water, and sewer for our 16 schools and seven additional buildings.

All Other Support Services

2% \$2,641,221

Everything else that goes into keeping our schools running, including technology, cost just over 2¢.

All figures shown are from the 2020-2021 Budget

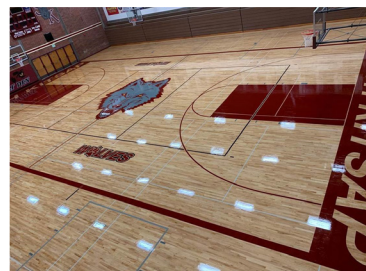


Your Tax Dollars at Work

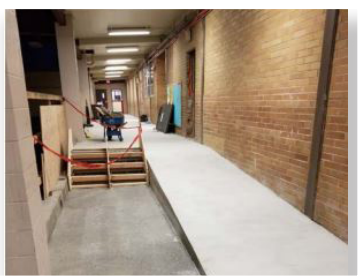
Thanks to support from the South Kitsap community, we are able to complete upgrades, maintenance, and capital levy projects. Evidence of responsible stewardship and updates on completed projects are presented at South Kitsap Board of Director meetings and posted on the district website. A sampling of recent projects is shown below.



The play structures were replaced at Mullenix Ridge, Olalla, Orchard Heights, Manchester, Hidden Creek, and Burley Glenwood. Additional elementary sites are planned soon.



The gymnasium floors at South Kitsap High School were sanded, repaired, freshly painted, and sealed.



ADA compliant ramps and lifts were added at South Kitsap High School to ease access for all users.



Renovation is underway to improve access to the lower play field at Burley Glenwood.



Accessible parking areas were repainted and striped at South Kitsap High School and the administration office.



Six student restroom facilities were renovated at South Kitsap High School to improve ADA compliance.

The South Kitsap School District provides equal educational and employment opportunity without regard to race, creed, religion, color, national origin, age, honorably-discharged veteran or military status, sex, sexual orientation – including gender expression or identity, marital status, or the presence of any sensory, mental, or physical disability, the use of a trained dog guide or service animal by a person with a disability. Equal access to activities, facilities and program is provided to the Boy Scouts of America and other designated youth groups. District procedure complies with all applicable state and federal laws. The Title IX Officer and Section 504 Coordinator with the responsibility for monitoring, auditing and ensuring compliance with this policy are:

Compliance/ADA/Title IX Coordinator
Dr. Mona Johnson,
Executive Director of Wellness & Support
2689 Hoover Avenue SE, Port Orchard, WA 98366
phone: 360-874-7063 email: johnsonmona@skschools.org

Section 504 Coordinator
Dr. Andrew Cain,
Principal
2689 Hoover Avenue SE, Port Orchard, WA 98366
Phone: 360-874-6022 email: cain@skschools.org

*This newsletter was paid for by
South Kitsap School District*